

AdBlue Emulator EURO 6

Installation manual for MAN EURO 6

Attention! Always connect the ground cable first! Otherwise, you can burn the emulator module or damage the SCR / NOx module of the truck!

AdBlue Emulator EURO 6 NOx compatible only with MAN trucks and can't be used for other MAN truck series or vehicles made by other manufacturers. This installation manual describes all steps necessary for correct AdBlue Emulator device installation on compatible MAN EURO 6 vehicles. We highly recommend you to delete all diagnostic errors from OBD system before proceeding to the installation process. The best option is to use MAN T200 diagnostic scanner. If you noticed new OBD DTC errors after installation of the AdBlue Emulator, please check the system again with the diagnostic scanner. There might be errors related to incorrect installation. This emulator doesn't require an additional programming or learning and we sell it ready to use. MAN EURO 6 emulator comes with a plug for direct connection.

AdBlue Emulator EURO 6 installation steps

The first step that you need to do is to find Selective Catalytic Reduction system pump. It should be located on the right side of the truck behind the cabin. When you locate the SCR system pump please disconnect the plug that is connected to the pump and connect the emulator (emulator has a direct connection plug). On the next step, you should remove these fuses:

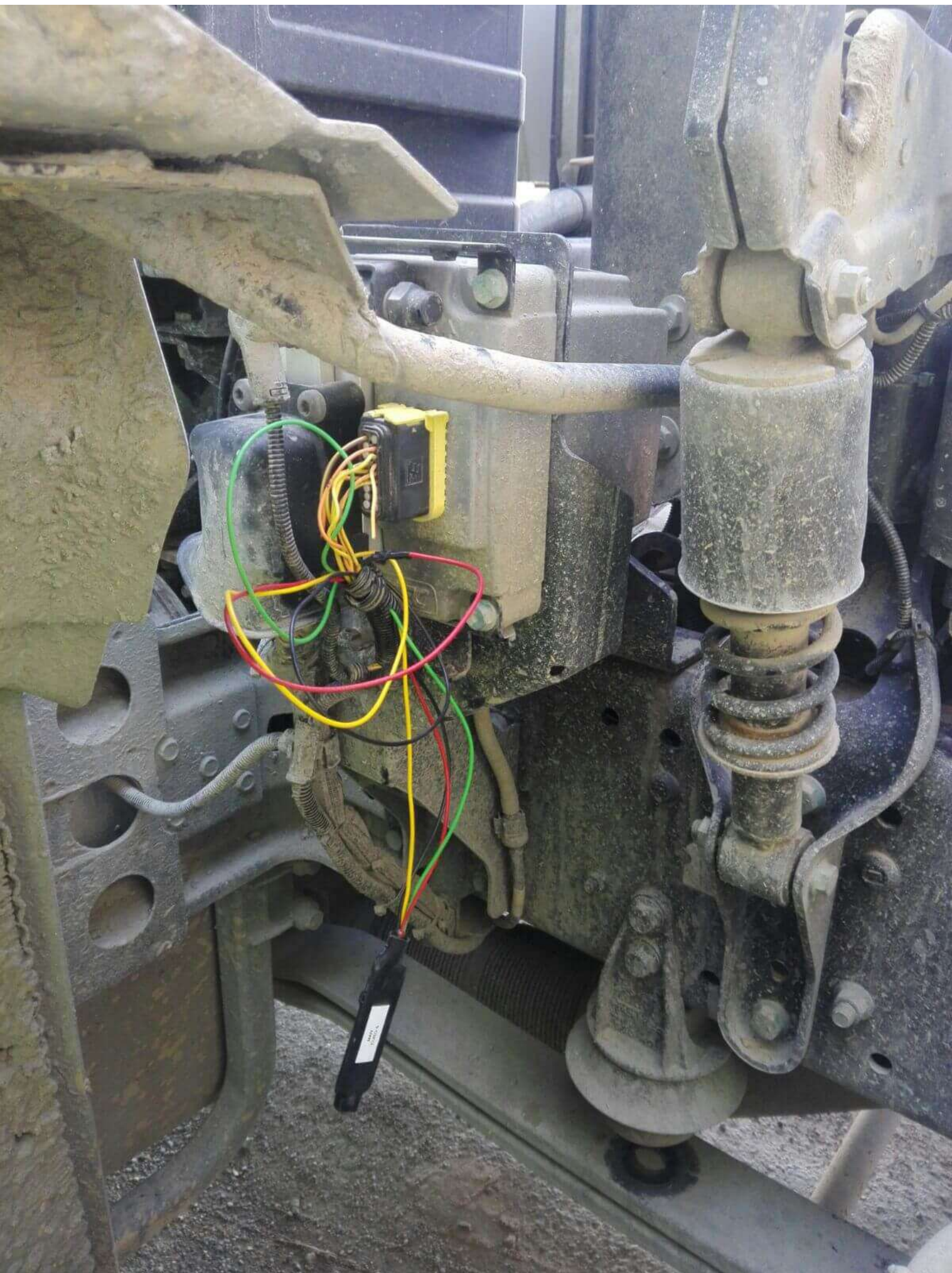
- Fuse F894 – multisensor in Diesel Exhaust Fluid tank
- Fuse F738 – signal (+30) of SCR system pump
- Fuse F1084 – exhaust upstream NOx sensor



Fuse F737 is the main fuse of the emulator from now. Fuse F1109 is the fuse of downstream NOx sensor. A1191 exhaust temperature sensor fuse. This sensor needs should work correctly, it is necessary for Diesel Particulate Filter regeneration. The last thing that you need to do is to disconnect power from NOx downstream sensor. There are two ways to do it. You can cut the PIN number 1 on the sensor plug. The other and the much better way is to remove the pin 10 from X3212 plug. This plug is visible on the right side at the rear of the engine. It's a TE plug of sixteen pins with the yellow key.

The most important thing is to look after the DPF (Diesel Particulate Filter) filter. After installation of the AdBlue Emulator on the EURO 6 truck you need to remove DPF. Otherwise, you need to turn off AdBlue Emulator periodically once in two weeks and drive at least 500 kilometers to make the DPF regeneration possible.

Attention! AdBlue emulators are illegal in some countries. You should check your local laws or laws of those countries that you might cross with your vehicle. AdBlue emulator alters SCR system thus makes the vehicle to produce higher exhaust gas emissions. EURO 6 and EURO 5 vehicles equipped with AdBlue emulator device will no longer match those EURO standards. Our AdBlue emulators designed for countries where environmental rules are less strict, and there are no requirements for vehicles to satisfy EURO 6 or EURO 5 regulations. By purchasing any AdBlue emulator, you assume full responsibility for the use of the device. It's your personal decision to use an emulator or not. We will not accept any liability for any consequences associated with usage of AdBlue emulator devices.



SCR pump unit

SCR pump unit female connector

Emulator direct connect male connector

