

# AdBlue Emulator V4 NOx

## Installation manual for Renault

Attention! Always connect the ground cable first! Otherwise, you can burn the emulator module or damage the SCR / NOx module of the truck!

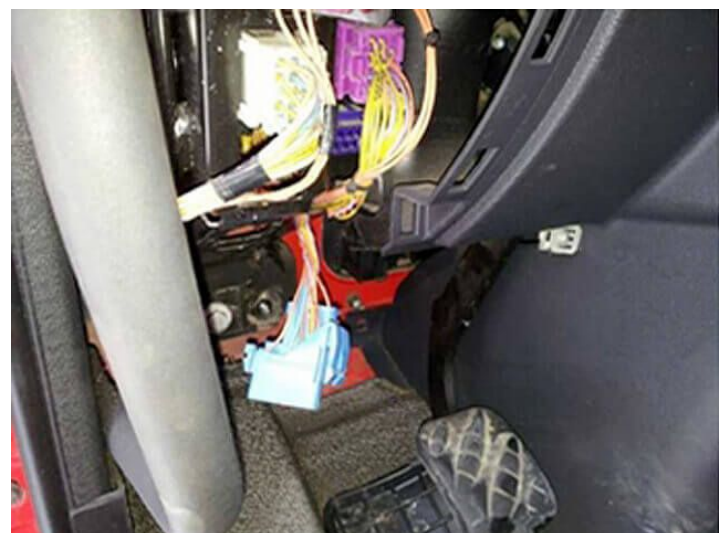
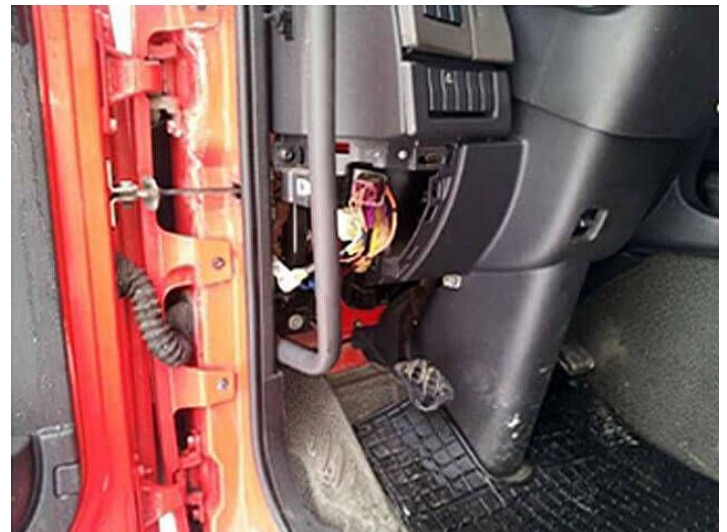
This is AdBlue Emulator V4 installation manual for Renault trucks (Magnum, Premium, Midlum and Kerax) equipped with AdBlue SCR system and NOx sensor. First of all you need to have emulator prepared for Renault trucks. If you have purchased emulator that is not prepared for Renault trucks you need to program it yourself. To do it you need to have AdBlue Emulator V4 programmer and follow the steps described in AdBlue Emulator V4 programming manual. If you have emulator ready for installation on the Renault trucks you can proceed to the next step of this manual.

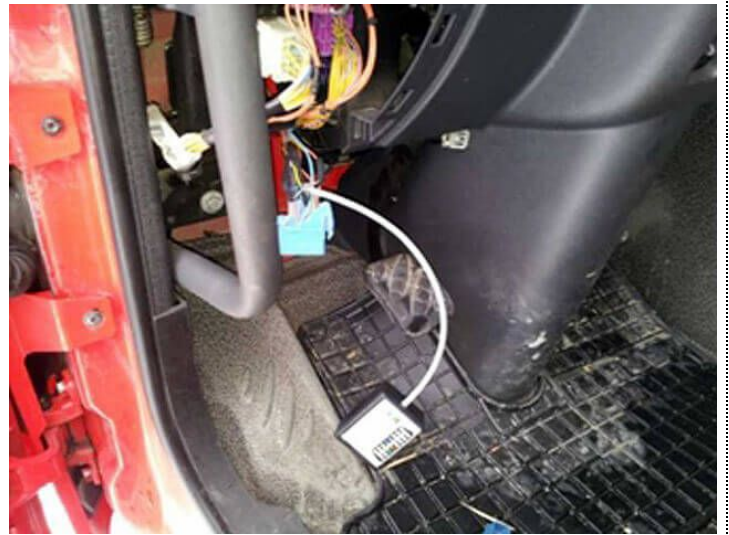
## AdBlue Emulator V4 NOx installation steps

To install AdBlue Emulator V4 NOx you need to locate necessary cables on your Renault truck. These cables are located on the left side of the steering wheel on the bottom of the panel under the OBD connector (actually these cables are connected to OBD connector). You need to remove the panel cover to access those cables. If you successfully accessed cables that are connected to OBD connector you can start connecting AdBlue emulator cables directly to them in such order:

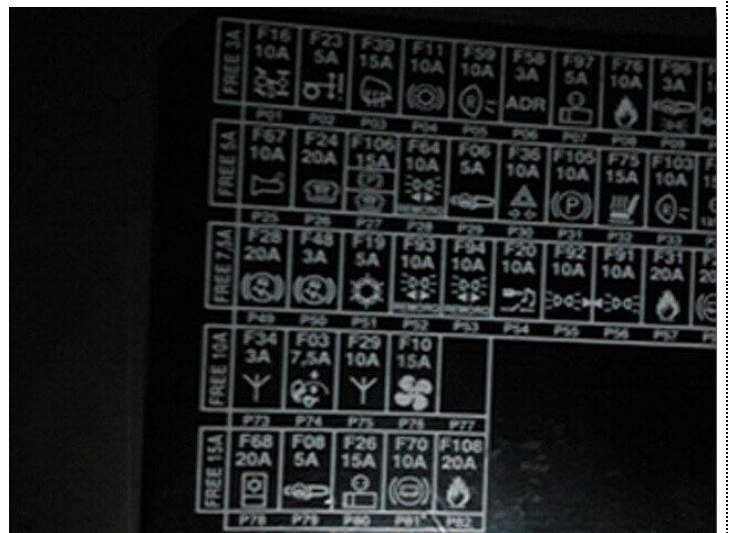
Emulator wire	Truck OBD PIN
Green	PIN 6 (CAN High)
Yellow	PIN 14 (CAN Low)
Blue	PIN 13 (RS 485 -)
Grey	PIN 12 (RS 485 +)
Brown	PIN 5 (Ground -)
White	PIN 16 (Power +)

Attention! Please connect BROWN (GROUND) cable first. It is necessary if you want to connect AdBlue emulator safely without any damage to emulator or truck itself. Please make sure that all connection points of emulator cables are isolated, place the emulator safely in a free space available near the OBD plug and now you can put the panel cover back.





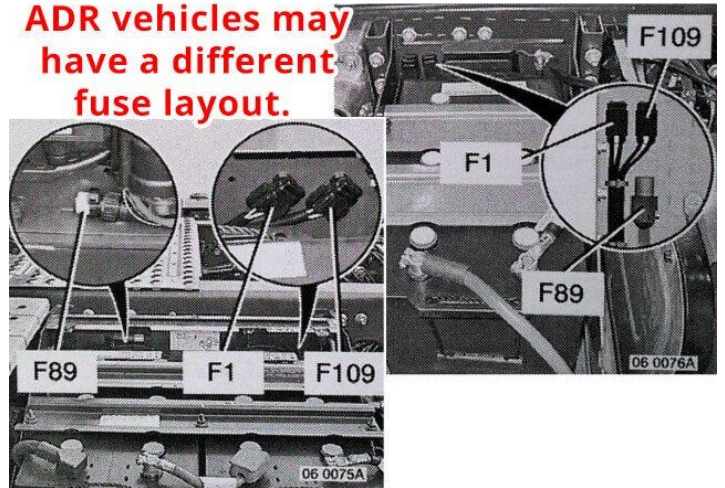
For the next step you need to remove fuse of SCR system. This is a F24 – 20A fuse, it is located in the fuse box (second fuse from the left in the second row), you can look for the fuse descriptions on the cover of the fuse box. You can find fuse box on the left side in front of passenger seat. Attention!!! On the Renault Magnum trucks you need to remove fuse F109 that is located behind the left side of the truck cabin near the battery. In ADR vehicles fuse layout may vary.







**ADR vehicles may have a different fuse layout.**

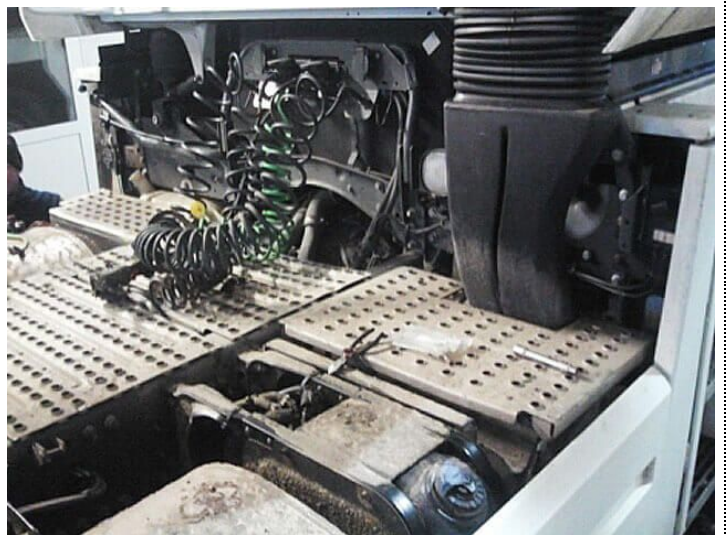
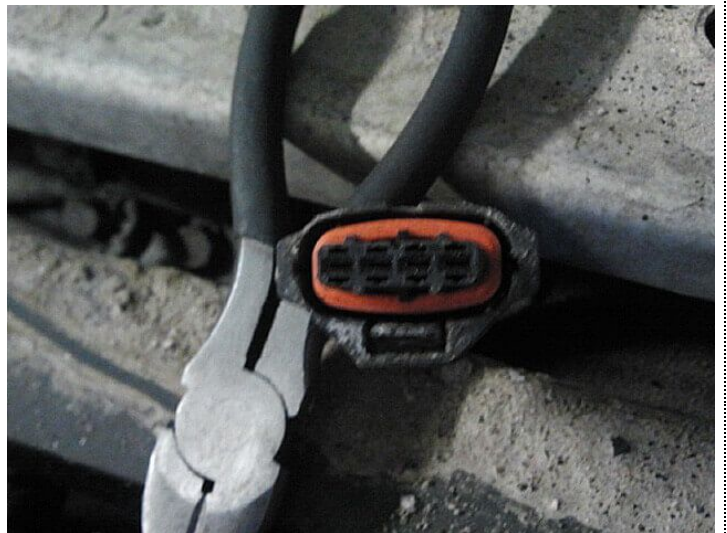


On the third step you to disconnect NOx sensor. NOx sensor is located on the right side of the vehicle, near to the end of exhaust system (right on the catalytic converter). You need to disconnect NOx sensor by disconnecting the plug which connects NOx sensor to the vehicle. Also you can cut of wires, isolate them and keep the plug in the place. Just make sure that you isolate everything.





On the final step you need to activate AdBlue Emulator. Turn on ignition on the truck and press accelerator pedal for 5-6 seconds, then turn off ignition, remove the ignition key and wait for a few seconds. Insert key again, turn on the ignition and you'll notice that there are no errors related to SCR system. Now your truck should work normally and should not consume AdBlue DEF (diesel exhaust fluid) liquid.



Attention! AdBlue emulators are illegal in some countries. You should check your local laws or laws of those countries that you might cross with your vehicle. AdBlue emulator alters SCR system thus makes the vehicle to produce higher exhaust gas emissions. EURO 6 and EURO 5 vehicles equipped with AdBlue emulator device will no longer match those EURO standards. Our AdBlue emulators designed for countries where environmental rules are less strict, and there are no requirements for vehicles to satisfy EURO 6 or EURO 5 regulations. By purchasing any AdBlue emulator, you assume full responsibility for the use of the device. It's your personal decision to use an emulator or not. We will not accept any liability for any consequences associated with usage of AdBlue emulator devices.