

SCR Emulator V5 NOx installation manual for Scania trucks

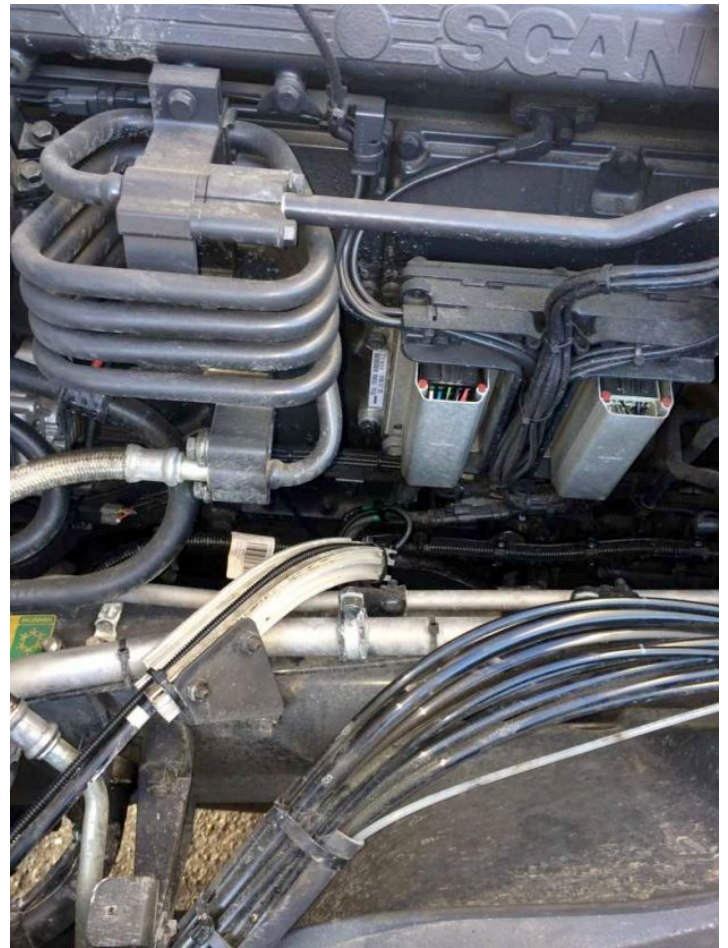
SCR Emulator V5 NOx is compatible with several Scania trucks. Below is the installation manual of the V5 emulator for Scania vehicles. Before installing SCR Emulator V5 NOx on the Scania truck, please make sure that you have an emulator programmed to the Scania program. You can order a pre-programmed emulator, or you can change the program by yourself anytime you want.

Connecting SCR Emulator V5 NOx on Scania trucks with dedicated cable

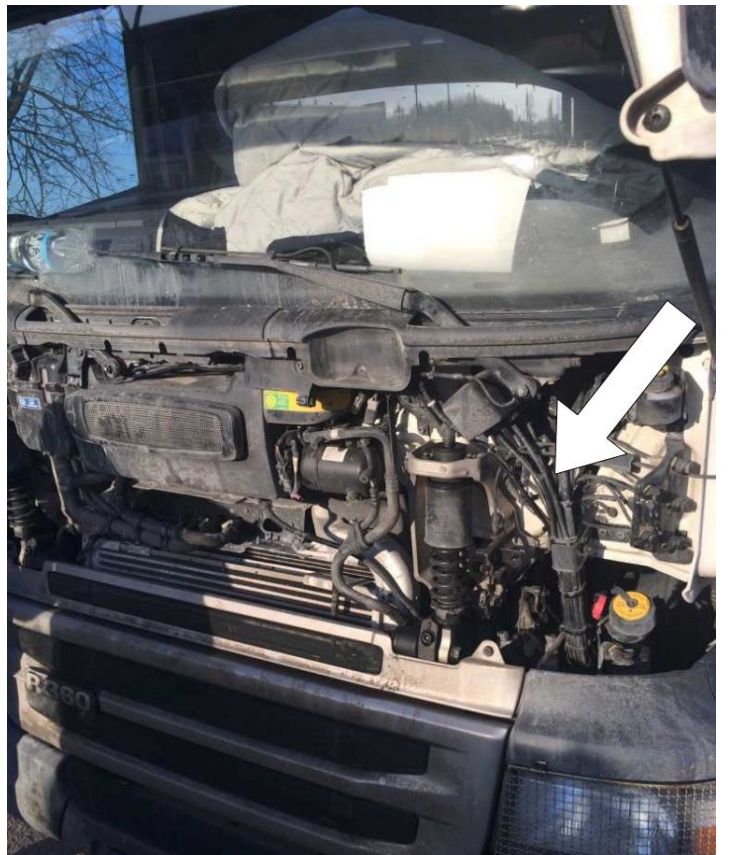
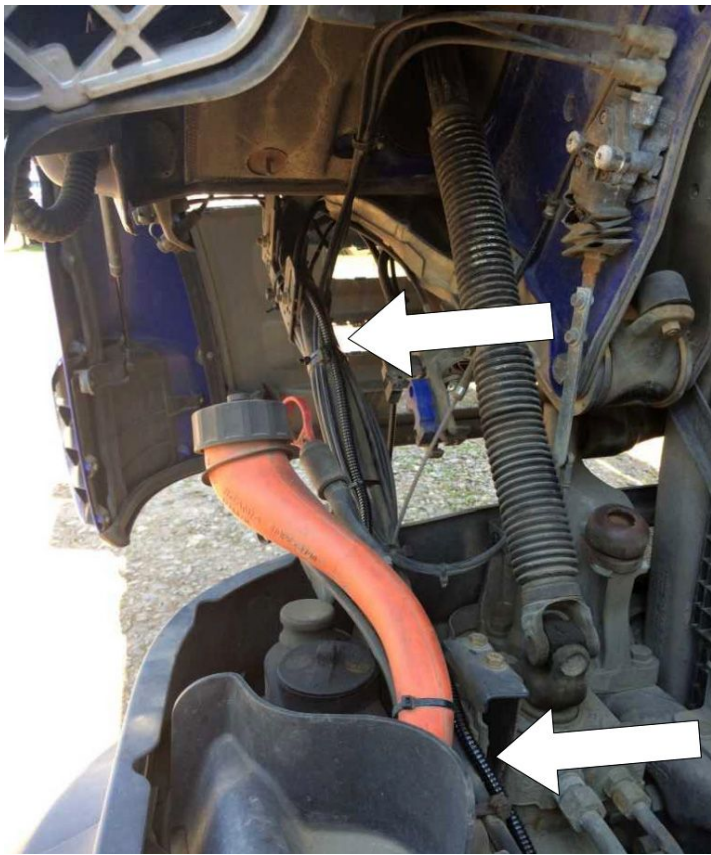
Step 1: Connecting the proprietary cable to lift the cabin and find the black plug that contains the CAN wiring. The plug can be located either at the top of the engine or between the front left wheel and the engine (refer to pictures on the left). Disconnect the plug and connect both ends to the proprietary cable. Once connected, lead the cable up towards the vehicle bonnet (refer to pictures below for basic guidelines).



Location on a V8 engine

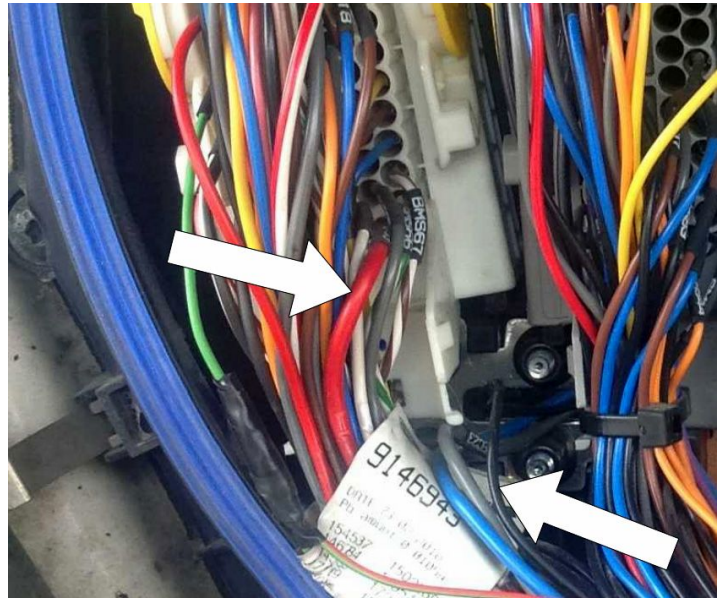


Location on a V6 engine



Step 2: Connecting the wires

- Black – Negative, connect to black (shown on image)
- Red – +24V Positive/Ignition, connect to red (shown on image)
- White – CAN High, connect to orange on the extension
- Brown – CAN Low, connect to black on the extension



Step 3: Removing fuses

Remove fuses No. 13 and No. 42 to disable the SCR system and NOx sensor.