

AdBlue Emulator V5 NOx

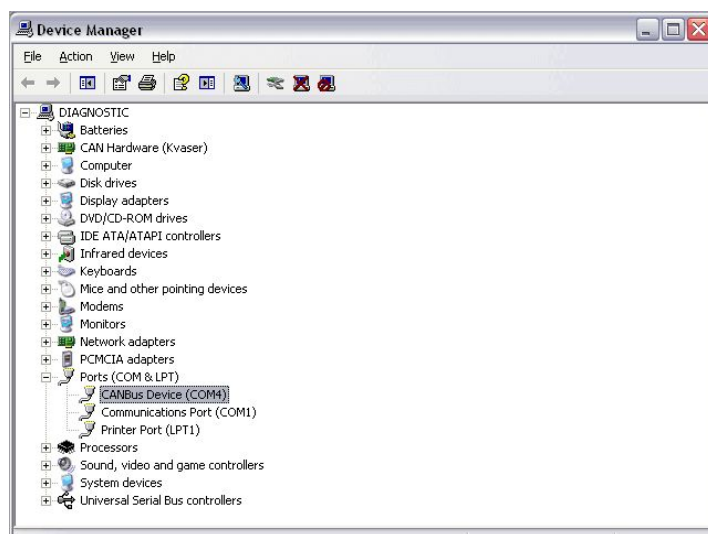
Programming manual

AdBlue Emulator V5 NOx is designed to support various trucks made by several manufacturers. It supports trucks made by MAN, DAF, FORD, Iveco, Mercedes-Benz, Volvo and Renault. AdBlue Emulator V5 NOx allows you to override original SCR (selective catalytic reduction) system to cut off DEF (diesel exhaust fluid like AdBlue) consumption without any unwanted factors like engine power loss, additional smoke from the exhaust system and DTC errors in OBD system. This device makes it clean and there will be no mentioned problems at all. You can purchase already programmed AdBlue Emulator V5 NOx or you can program it yourself (no need for special equipment, just a PC with compatible OS and USB port, software provided only with larger orders, at least 10 units per order). There are no restriction how many times you can change program and same device can work with all supported trucks, you just need to change the program.

AdBlue Emulator V5 NOx programming

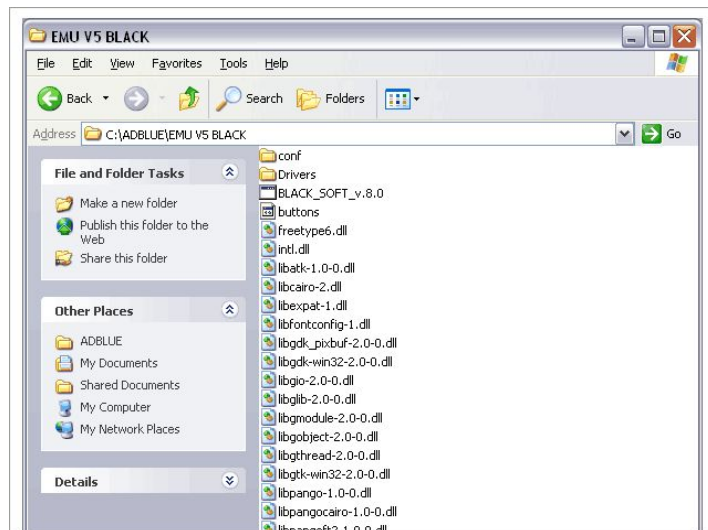
Connection

It's easy to connect AdBlue Emulator V5 NOx for programming to your PC. First of all we recommend you to unscrew four bolts and take of plastic cover from emulator. There are LED indicators on PCB (Printed Circuit Board) and it's better to see them as they provide necessary information about state of the emulator. Now when you have cover removed please connect USB cable to PC and then to emulator (emulator is equipped with mini USB socket). That's it, now you must install drivers and if you already have installed drivers you can skip installation step and proceed to emulator programming. You can find drivers for both 32bit and 64bit Windows systems in AdBlue Emulator V5 software archive (extract whole archive to preferred location and directory).



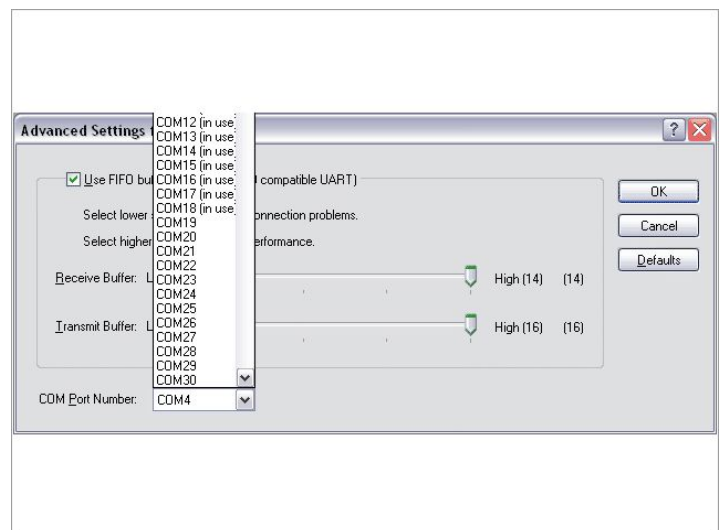
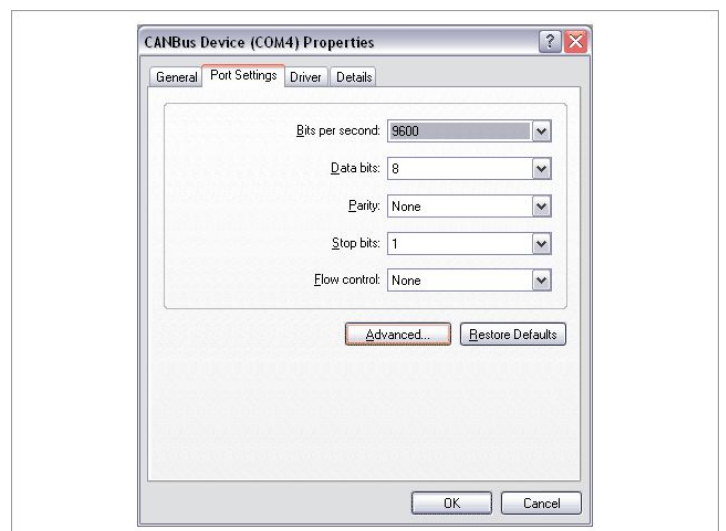
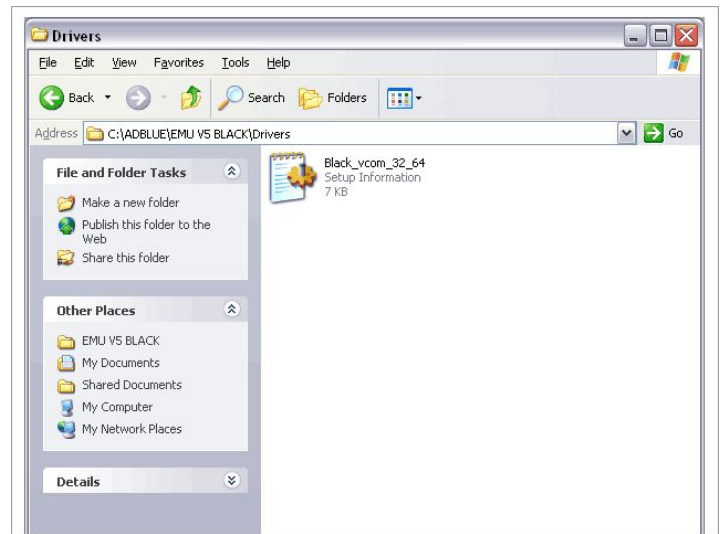
Drivers

AdBlue emulator driver installation is simple and takes only few minutes to complete. After success USB connection emulator will appear as a new device. Choose option to manually select driver file and select driver file that is located in AdBlue Emulator V5 NOx software directory "Drivers". There is only one driver file inside so there is no chance to mix up. This driver file is universal, compatible with Windows 32bit and 64bit versions. That's it, your emulator now completely ready for programming.



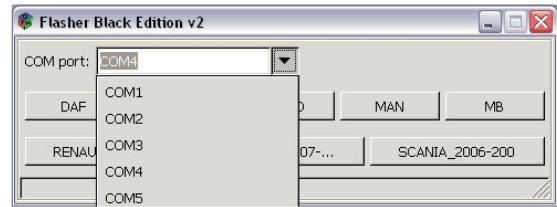
Port configuration

Before you proceed with programming you need to check which COM port is used by emulator. Go to Start → Control Panel → System → Hardware (tab) → Device Manager → Ports (COM & LPT), now you should see device CANBus Device (COM + port number). Remember this port number, you will need this number later.



Programming

Open emulator programming software. You will notice a drop down list on the top of the window "COM port:". Open this drop down list and select COM port of your device (number that you saw on the Device Manager). Now your emulator and software are completely ready for programming. Just press any button with necessary truck make and programming data will be automatically sent to emulator. Now wait for a few seconds, in case of successful programming LED indicator will start to blink (this is why we suggest to remove plastic cover from emulator before connecting it to PC). If it's blinking it means that you successfully changed the program.



Disconnecting

Now close programming software and unplug USB cable. You emulator is ready for installation to the truck. If you want to change the program just connect emulator again, set the proper COM port on programming software and select program you want, there is no need to erase previous program, it will be replaced automatically.

Attention! AdBlue emulators are illegal in some countries. You should check your local laws or laws of those countries that you might cross with your vehicle. AdBlue emulator alters SCR system thus makes the vehicle to produce higher exhaust gas emissions. EURO 6 and EURO 5 vehicles equipped with AdBlue emulator device will no longer match those EURO standards. Our AdBlue emulators designed for countries where environmental rules are less strict, and there are no requirements for vehicles to satisfy EURO 6 or EURO 5 regulations. By purchasing any AdBlue emulator, you assume full responsibility for the use of the device. It's your personal decision to use an emulator or not. We will not accept any liability for any consequences associated with usage of AdBlue emulator devices.